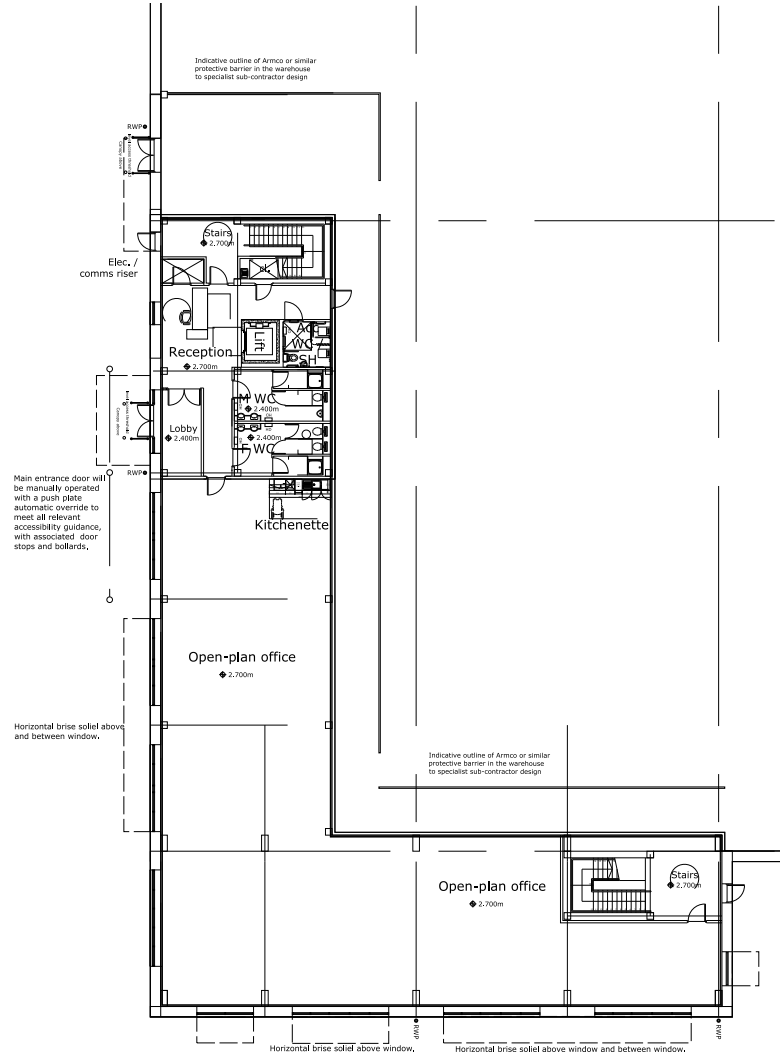


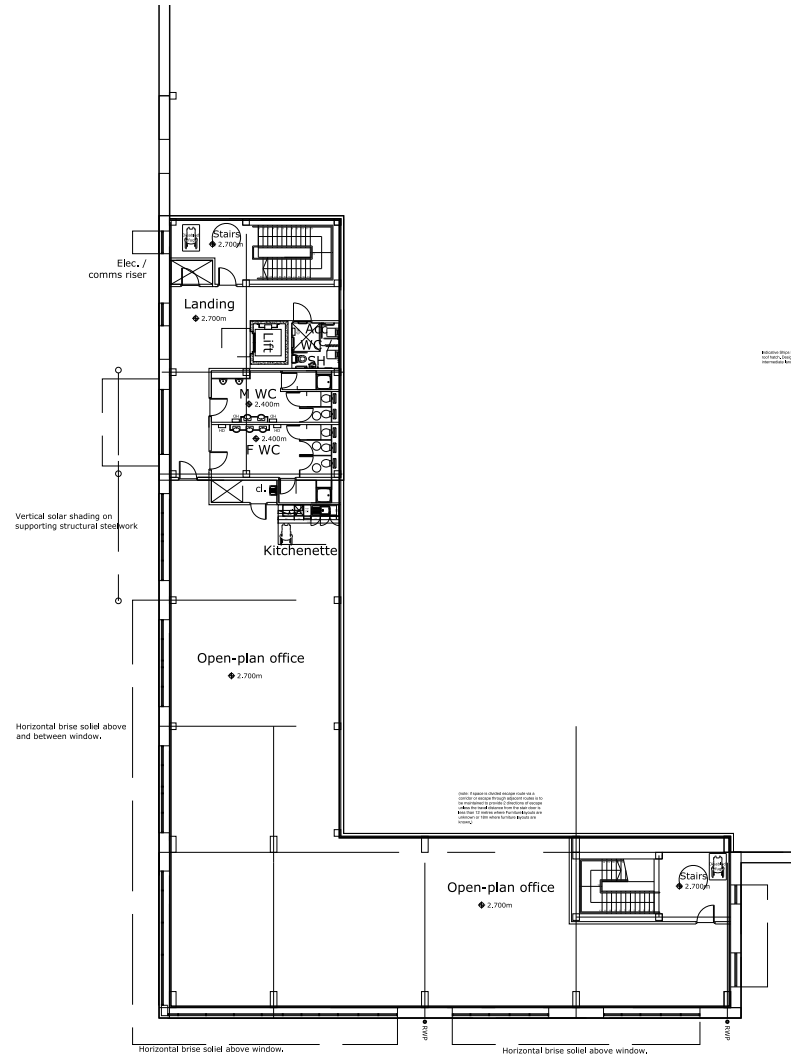
ERGO 354 FRADLEY

LICHFIELD, WS13 8LH

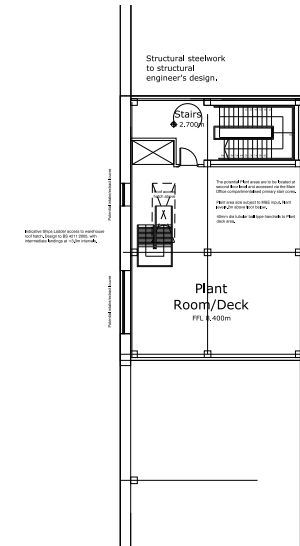
MAIN OFFICE GROUND FLOOR



MAIN OFFICE FIRST FLOOR



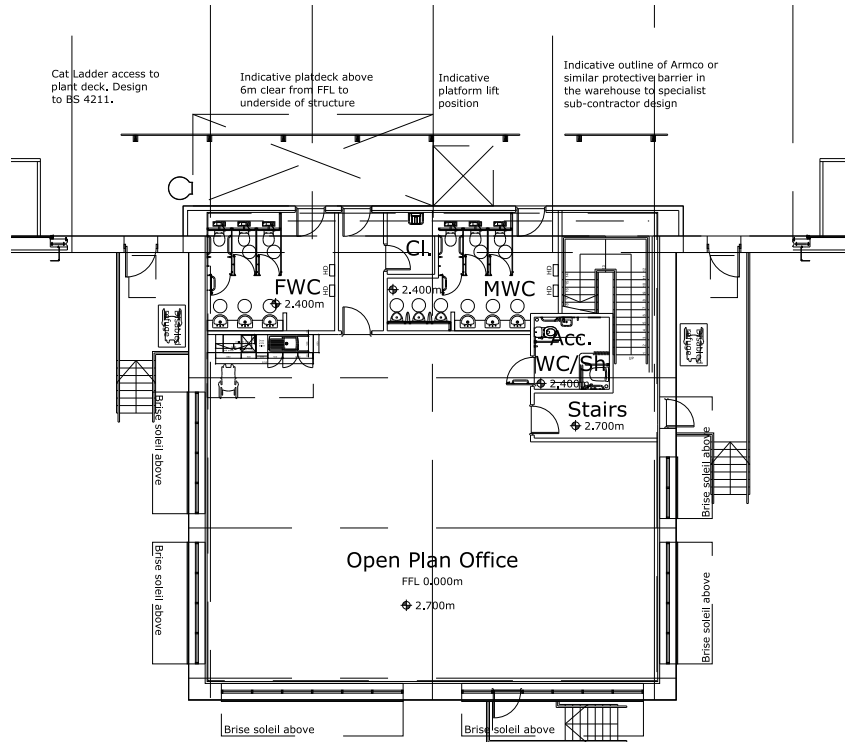
MAIN OFFICE SECOND FLOOR



ERGO 354 FRADLEY

LICHFIELD, WS13 8LH

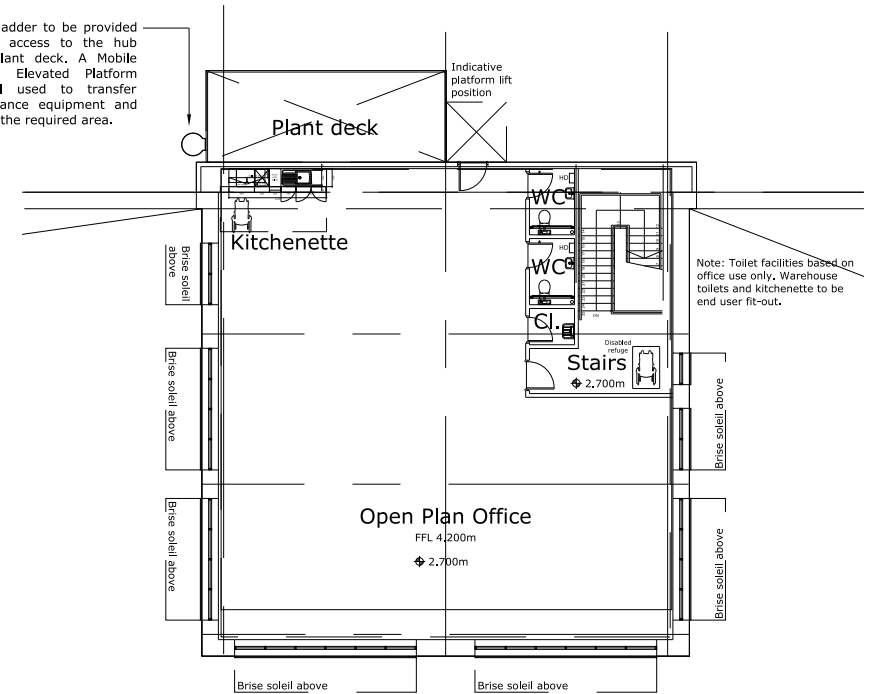
HUB OFFICE GROUND FLOOR EAST



Structural steelwork to structural engineer's design.

HUB OFFICE FIRST FLOOR EAST

Access ladder to be provided to gain access to the hub office plant deck. A Mobile Working Elevated Platform Lift will be used to transfer maintenance equipment and tools to the required area.

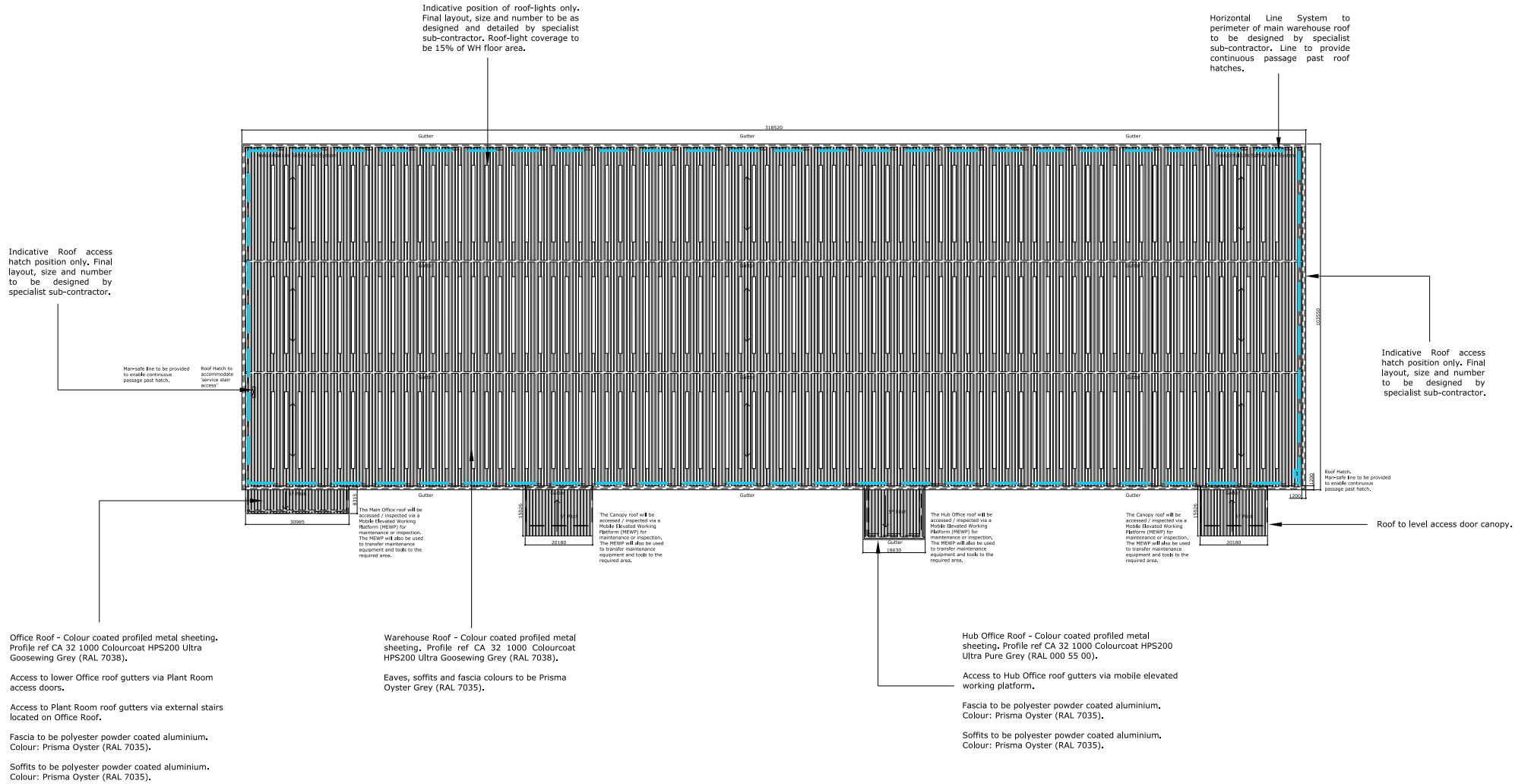


0 1 5 10
Metres at scale 1:100

ERGO 354 FRADLEY

LICHFIELD, WS13 8LH

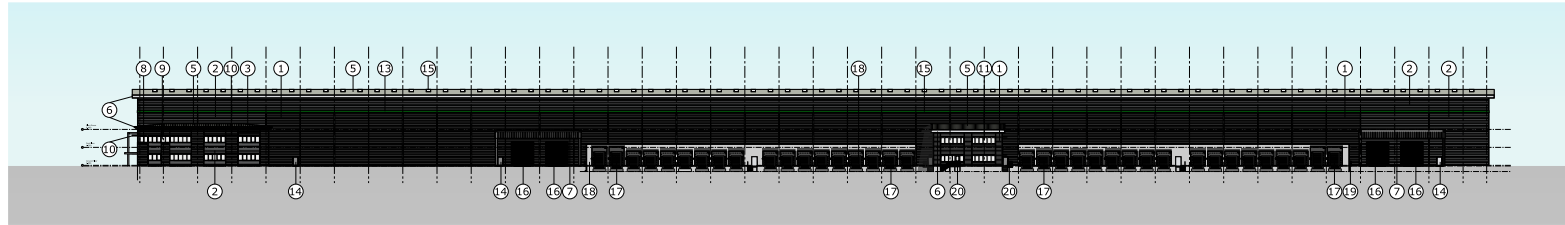
ROOF



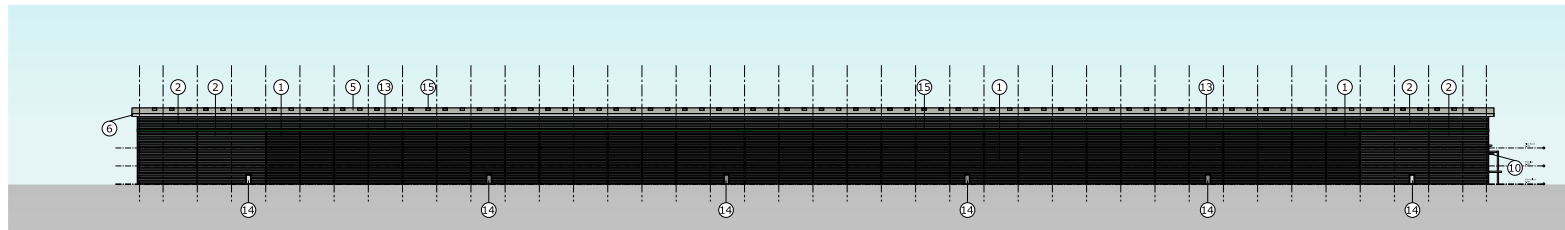
ERGO 354 FRADLEY

LICHFIELD, WS13 8LH

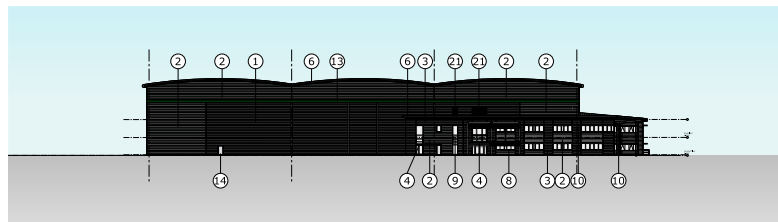
BUILDING ELEVATIONS



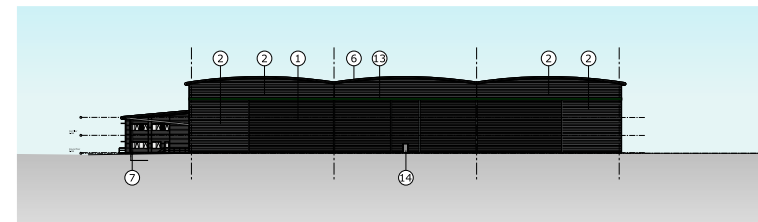
SOUTH ELEVATION SCALE 1:500 @ A1



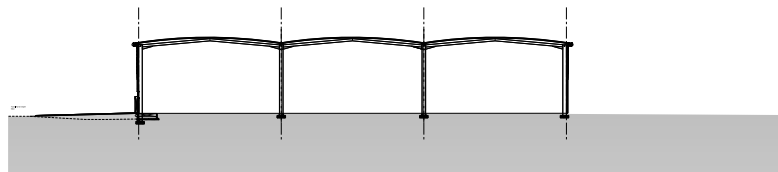
NORTH ELEVATION SCALE 1:500 @ A1



WEST ELEVATION SCALE 1:500 @ A1



EAST ELEVATION SCALE 1:500 @ A1



TYPICAL CROSS SECTION SCALE 1:500 @ A1

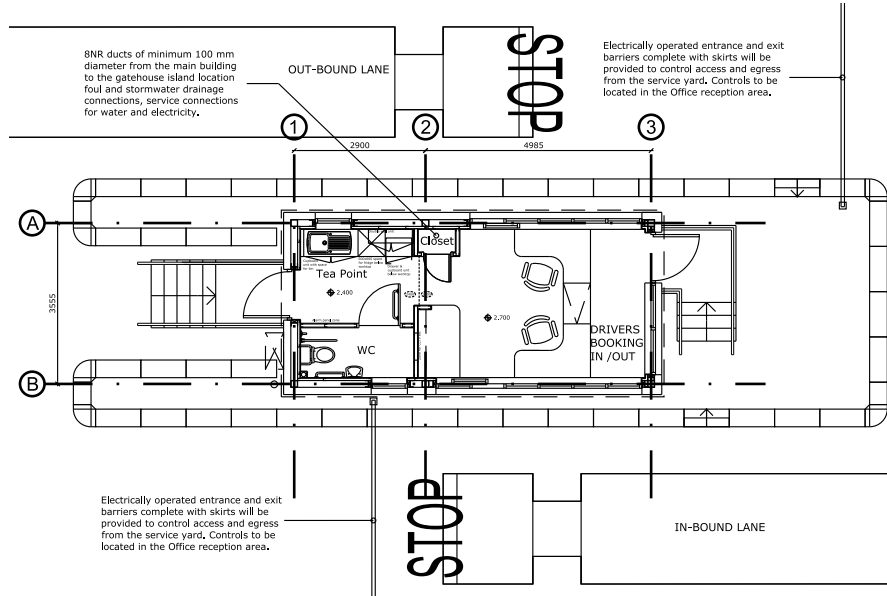
MATERIALS NOTES

- 1 Walls - Colour coated profiled metal sheeting, Profile ref. CA 32 1200W best horizontal Colourscoat HPS200 Ultra Pure Grey (RAL 000 55 00).
- 2 Walls - Colour coated profiled metal sheeting, Profile ref. CA 32 1200W best horizontal Colourscoat Pitima Oyster Grey (RAL 7035).
- 3 Walls - Colour coated profiled metal sheeting, Profile ref. CA 32 1200W best horizontal Colourscoat HPS200 Ultra Pure Grey (RAL 000 55 00).
- 4 Canopy - Painted finish to supporting steelwork, Colour to be Oyster Grey (RAL 7035).
- 5 Roof - (Warehouse and Office) Colour coated profiled metal sheeting, Profile ref. CA 32 1200W Colourscoat HPS200 Ultra Pure Grey (RAL 7035).
- 6 Warehouse, Hub and Main Office roof eaves, soffits and fascia to be colour coated profiled metal sheeting, Colour to be Pitima Oyster Grey (RAL 7035).
- 7 Level Access Canopy roof eaves, soffits and fascia to be colour coated profiled metal sheeting, Colour to be HPS200 Ultra Pure Grey (RAL 000 55 00).
- 8 Main Office Windows, Curtain Walling & Doors - Polyester powder coated aluminium double glazed (grey tint) with integral PVC aluminium internally opening lights, Colour Ref (frames): Slate Grey (RAL 7012).
- 9 Glazed spandrel panels - Polyester powder coated double glazed panels, glazing and frames to be Slate Grey (RAL 7012) to match window frames.
- 10 Brise Soleil & Office Canopies - Polyester powder coated finish to extruded aluminium blades, Painted finish to supporting steelwork, Colour to be Oyster Grey (RAL 7035).
- 11 Hub Office Windows, Curtain Walling & Doors - Polyester powder coated aluminium double glazed (grey tint) with integral PVC aluminium internally opening lights, Colour Ref (frames): Oyster Grey (RAL 7035).
- 12 Rainwater downpipes to be polyester powder coated aluminium, Colour Refs: Ultra Pure Grey (RAL 000 55 00).
- 13 Feature Band - Polyester powder coated aluminium, Colour Ref: Oast Green (RAL 6005).
- 14 Personnel fire escape doors to be galvanneal mild steel to steel frames including ironmongery appropriate to location and use, and site applied paint finish to be Pitima Oyster Grey - RAL 7035 & Pure Grey RAL 000 55 00. To match the cladding colour that they sit within.
- 15 Non-fragile triple skinned GRP roof lights, ThermoLight will be provided to approximately 15% of the floor area, Final layout, size and number to be as designed and detailed by specialist subcontractor.
- 16 Electrically operated insulated level access sectional doors The surface finish to the external face of the doors will be Silver (RAL 9006) with internal finish of White (RAL 9002).
- 17 Electrically operated insulated sectional doors, Silver RAL 9006, Hydraulic Dock leveler finish to be Black RAL 9005.
- 18 Pre-cast insulated concrete walling and dock bays.
- 19 Arrows or similar barrier galvanneal mild steel and handrails is to be provided adjacent to the retaining walls to prevent MVU damage and to protect personnel from falling. Barrier uprights are to be fixed to the concrete. Pre-cast retaining walls will be provided to the dock area of the building. All to the Structural Engineer's details.
- 20 External steps from the warehouse finished floor level to ground level to be constructed galvanneal steel with an open mesh slip resistant finish. Handrails and balustrading will be provided in circular hollow, hot dipped galvanneal mild steel sections. Steel staircases shall be provided with drilled drainage holes to prevent standing water.
- 21 Polyester powder coated aluminium framed louvre system, Colour Oyster Grey.

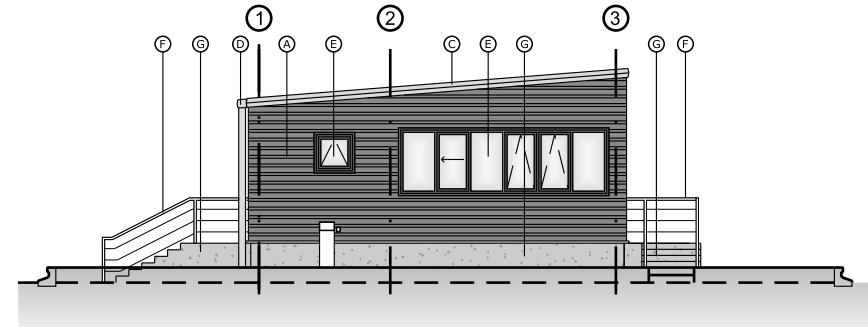
ERGO 354 FRADLEY

LICHFIELD, WS13 8LH

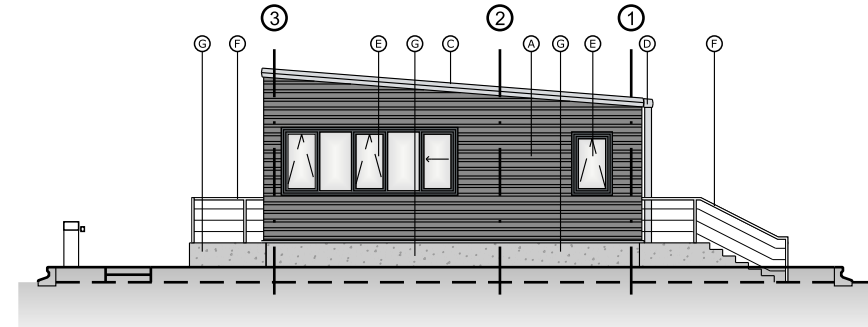
GATEHOUSE PLAN AND ELEVATIONS



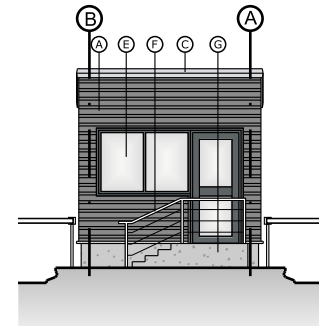
Gatehouse Plan



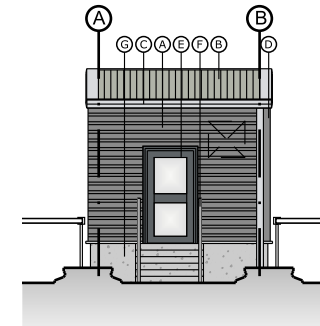
In-Bound Elevation



Out-Bound Elevation



Front Elevation



Rear Elevation

Materials Notes:

- Wall Cladding**
Colour coated profiled metal sheets, laid horizontal
Colour - RPS200 Ultra Pure Grey (RAL 000 55 00)
Profile - CA 32 1000W
- Roof Cladding**
Colour coated profiled metal sheets, laid vertical
Colour - RPS200 Ultra Goosewing Grey (RAL 7038)
Profile - CA 32 1000E
- Eaves, soffits and fascias** to be Prima Oyster Grey (RAL 7035)
- Rainwater Goods**
Colour coated metal
Colour - Oyster Grey (RAL 7035)

- Windows and Doors**
Polyester powder coated finish to aluminium frame, double glazed system. Window to WC to be frosted.
Colour - Silver Grey (RAL 7012).
Glazing tint colour to be grey.
- Stair Handrails**
Colour coated metal.
Colour - White (RAL 9010)
- Upstand & Stairs**
Concrete Upstand and Stairs - Fair faced

Notes:

To be read in conjunction with relevant consultants drawings.

Colours and cladding profile to suit overall development design

GIA: 24.3m² / 262m²

Revision:

- - -